



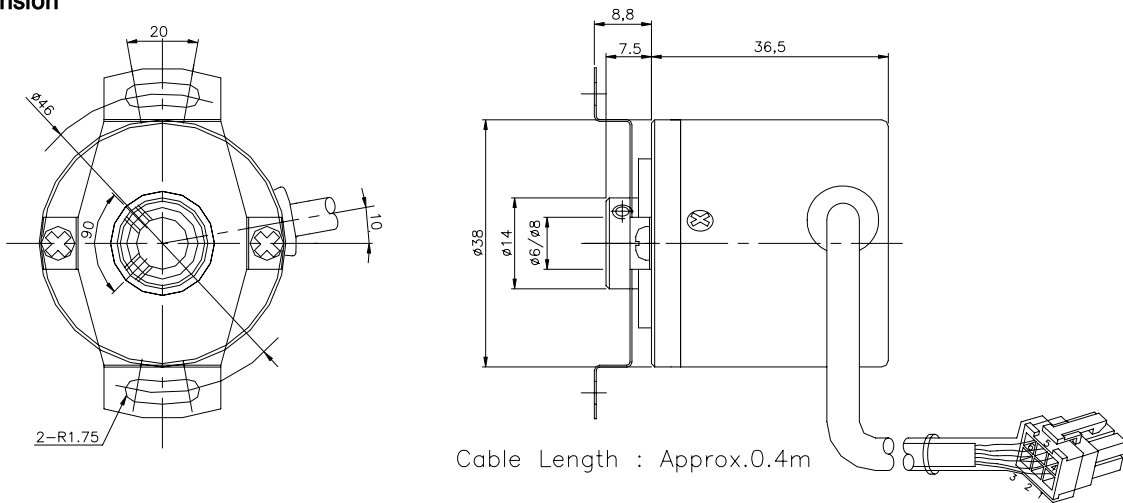
**Feature**

- Hollow Shaft type
- Small & Compact size
- Measuring instrument
- Low cost type

**Application**

- General purpose
- Industrial use
- Textile machine

**Dimension**



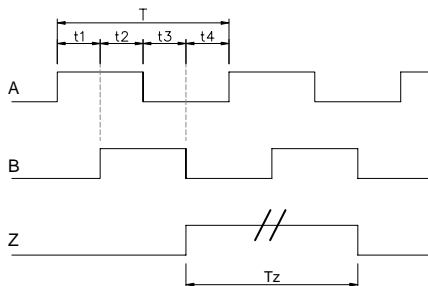
**Electrical specifications**

Resolution	500/1000 P/R
Supply voltage	DC +5V±5% DC +5~28V
Current consumption	Max. 140mA
Max. response frequency	Max.100KHz
Output	Voltage/OC
Rising / Falling time	less 3µs

**Mechanical specifications**

Max. rotating speed	3,500 rpm	
Starting torque	Max. 100gf. cm at 25	
Moment of inertia	Max. 10gf. cm <sup>2</sup>	
Allowable shaft load	Radial	Max. 2.2Kg
	Axial	Max. 1.0Kg
Vibration resistance	10~55Hz / 1.5mm	
Shock resistance	50G, 11msec	
Operation temperature range	- 10~+70	
Storage temperature range	- 20~+85	
Protection	IP50	

**Output Signal**



**Duty ratio**

- $t1+t2, t3+t4 = T/2 \pm T/8$
- $t1, t2, t3, t4 = T/4 \pm T/8$
- $Tz = 14T \text{ or } 20T$

Signal in CW on the view from the mounting