

RIA-60 Series



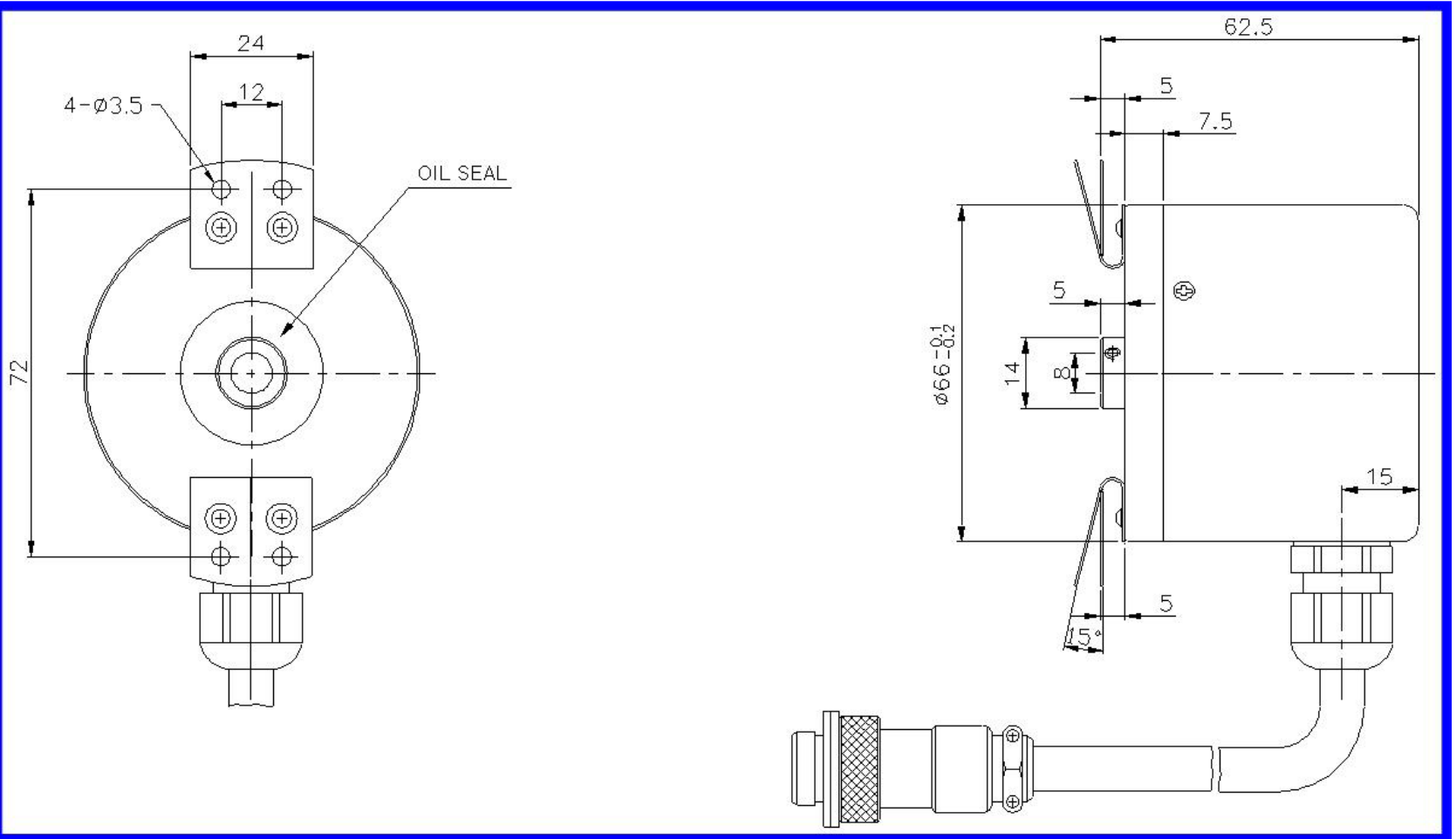
Feature

- Hollow shaft type
- Various resolution
- High speed response
- Custom made
- Wide supply voltage range

Application

- General purpose industrial use
- Industrial robot

Out Dimensions



Specification

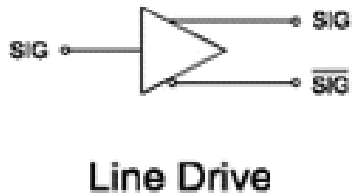
Electrical Spec.

Resolution	50/100/120/160/200/250/256 300/360/500/600/1000 1024/2000/2048/2500 P/R	
Supply Voltage	Line Drive	DC+5V±5% DC+5V~28V
	Open Collector Voltage Output Totempole	DC+5V~28V
Current Consumption	150 mA MAX	
Max. Response Frequency	200 kHz MAX	
Rising / Falling Time	Line Drive	0.2 μs
	Open Collector Voltage Output Totempole	3 μs

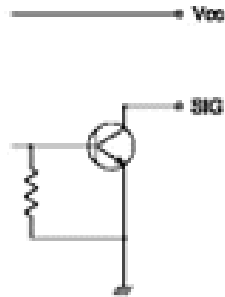
Mechanical Spec.

Maximum Rotating Speed	7,000 rpm	
Starting Torque	100gf•cm MAX at 25 °C	
Moment of Inertia	10gf•cm² Max	
Allowable Shaft Load	Radial	2.2kg Max
	Axial	1.0kg Max
Vibration Resistance	10 ~ 55Hz / 1.5mm	
Shock Resistance	50G, 11msec	
Operation Temp. Range	-10 °C ~ +70 °C	
Storage Temp. Range	-20 °C ~ +85 °C	
Protection	IP50, IP64	

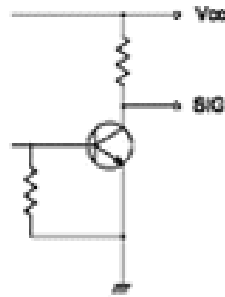
출력 회로



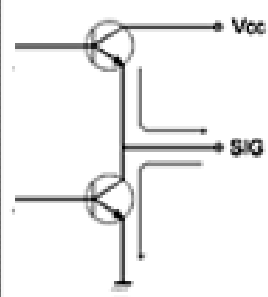
Line Drive



Open-Collector



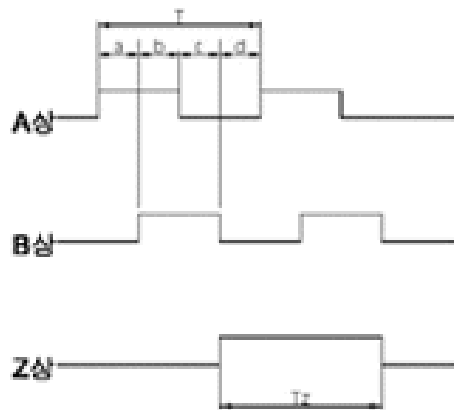
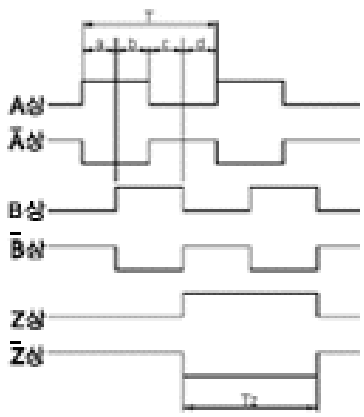
Voltage Output



Totem Pole

- 주기비율
 $(a+b, c+d) = T/2 \pm T/8$
 $A, b, c, d = T/4 \pm T/8$
 $T_z = T \pm T/2$

출력 파형



- 본 파형은 취부면에서 봤을때 시계방향