

RIB-A1 SERIES



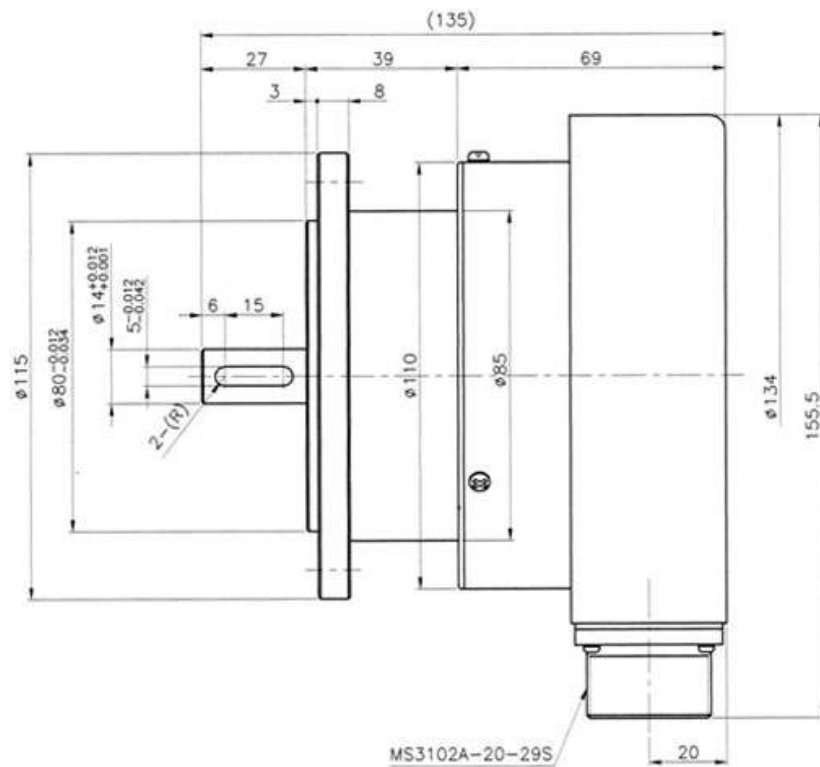
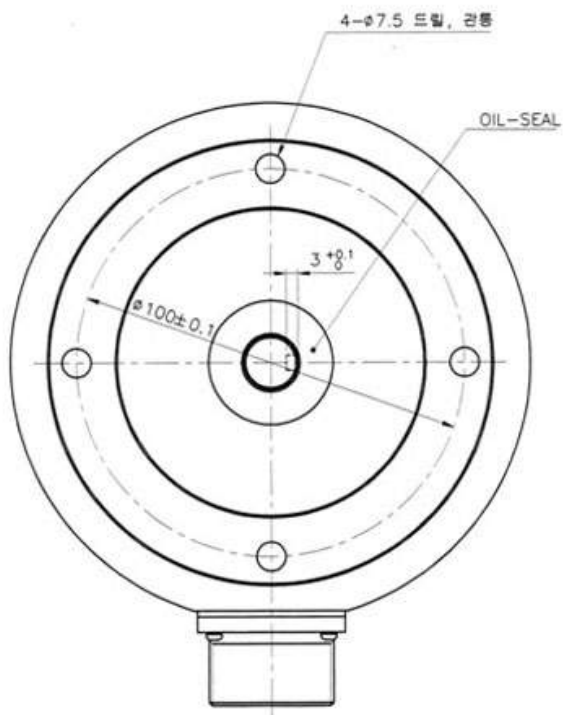
Feature

- Ultra rugged model
- High reliability
- Custom mode

Application

- Paper making machine
- Iron & steel production line
- Measuring Instrument

Out Dimensions



Specification

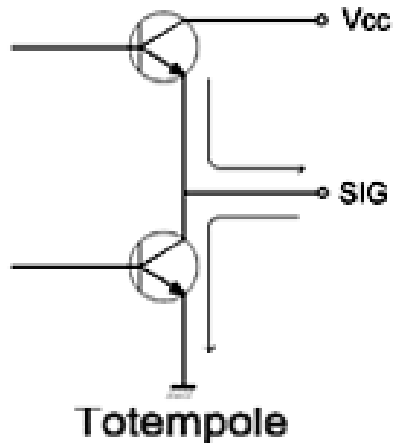
Electrical Spec.

Resolution	500/1024/1200 P/R
Supply Voltage	DC+5~24V
Current Consumption	300 mA MAX
Max. Response Frequency	60 kHz MAX
Rising/Falling Time	1 μS

Mechanical Spec

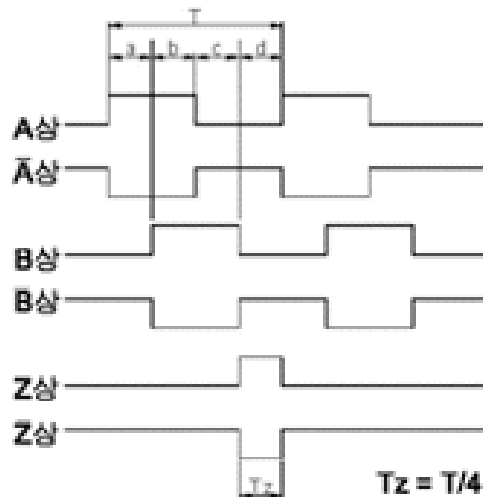
Maximum Rotating Speed	3,000 rpm	
Starting Torque	250gf•cm MAX at 25 °C	
Moment of Inertia	100gf•cm² Max	
Allowable Shaft Load	Radial	5kg Max
	Axial	5kg Max
Vibration Resistance	10 ~ 55Hz / 1.5mm	
Shock Resistance	100G, 11msec	
Operation Temp. Range	-10 °C ~ +70 °C	
Storage Temp. Range	-20 °C ~ +85 °C	
Protection	IP64	

회로 구성



- 주기비율
 $(a+b, c+d) = T/2 \pm T/8$
 $A, b, c, d = T/4 \pm T/8$
 $T_z = T \pm T/2$

회로 구성



- 본 파형은 취부면에서 봤을때 시계방향