



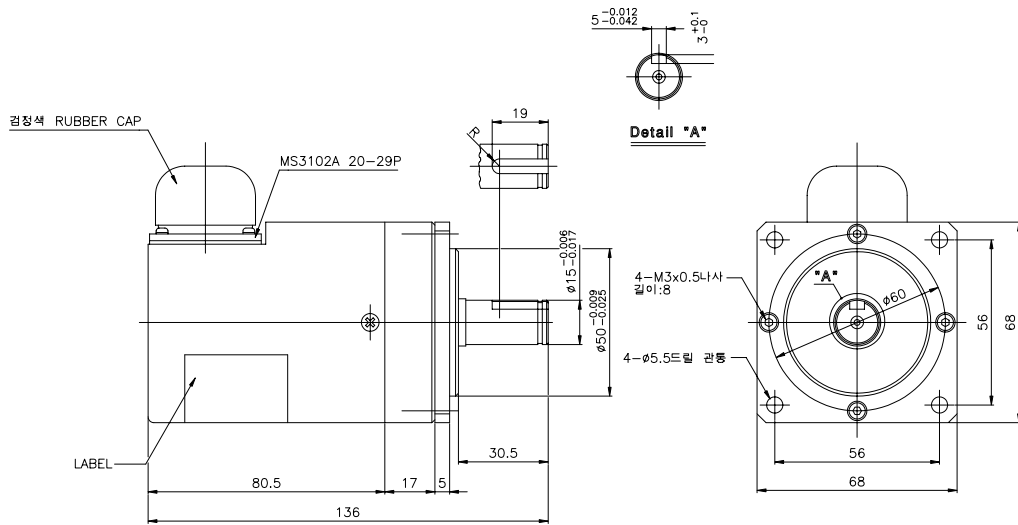
Dimension

**Feature**

- Heavy duty type
- High responsibility
- Transmittable for a LONG distance
- Rigid type

**Application**

- NC Machine
- Measuring instrument
- Robot
- Industrial use



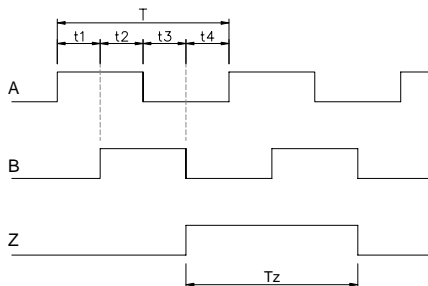
**Electrical specifications**

Resolution	1024 P/R	
Supply voltage	Line Drive	DC +5V
	Totem - pole	DC +5 ~ 28V
Current consumption	Max. 150mA	
Max. response frequency	Max. 136KHz	
Output	Line drive/Totem - pole	
Rising / Falling time	Line drive : less 0.3μs Totem - pole : less 3μs	

**Mechanical specifications**

Max. rotating speed	8,000 rpm	
Starting torque	Max. 300gf. cm at 25	
Moment of inertia	Max. 250gf. cm <sup>2</sup>	
Allowable shaft load	Radial	Max. 5Kg
	Axial	Max. 5Kg
Vibration resistance	10 ~ 55Hz / 1.5mm	
Shock resistance	50G, 11msec	
Operation temperature range	- 10 ~ +60	
Storage temperature range	- 20 ~ +80	
Protection	IP50	

**Output Signal**



**Duty ratio**

$$t1+t2, t3+t4 = T/2 \pm T/8$$

$$t1, t2, t3, t4 = T/4 \pm T/8$$

$$Tz = T \pm T/2$$

Signal in CW on the view from the mounting

**Output Phase : A, /A, B, /B, Z, /Z**