



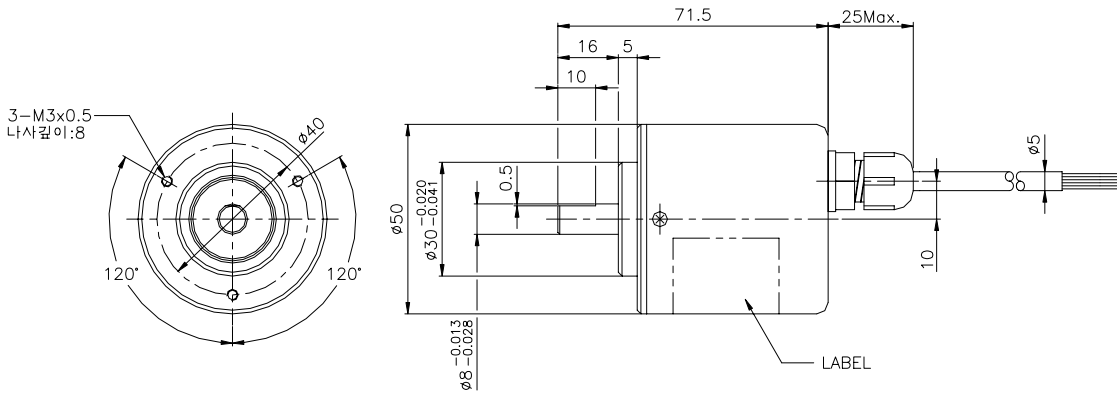
**Feature**

- Shaft type
- Wide range application
- Measuring instrument
- Low cost type
- Various resolution & High responsibility

**Application**

- General purpose
- Conveyor line
- Industrial use
- Textile machine
- Robot
- Injection machine

**Dimension**



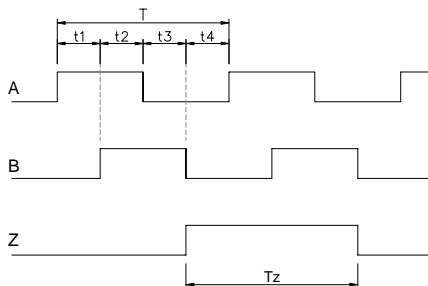
**Electrical specifications**

Resolution	30/60/100/200/360/ 400/500/512/600/ 1000/1024 P/R
Supply voltage	DC +4.75~28V
Current consumption	Max. 60mA
Max. response frequency	Max.85KHz
Output	Totem-pole
Rising / Falling time	less 3μs

**Mechanical specifications**

Max. rotating speed	5,000 rpm	
Starting torque	Max. 30gf.cm at 25	
Moment of inertia	Max. 20gf.cm <sup>2</sup>	
Allowable shaft load	Radial	Max. 5Kg
	Axial	Max. 3Kg
Vibration resistance	10~55Hz / 1.5mm	
Shock resistance	50G, 11msec	
Operation temperature range	- 10~+50	
Storage temperature range	-20~+85	
Protection	IP54 / IP64	

**Output Signal**



**Duty ratio**

$t1+t2, t3+t4 = T/2 \pm T/8$

$t1, t2, t3, t4 = T/4 \pm T/8$

$Tz = T \pm T/2$

Signal in CCW on the view from the mounting